

NISSAN TRADING CO., LTD.

Office Reorganization/Personnel Reshuffle

Dear Sir/Madam,

We would like to inform our organization change from next month, April 2021.

We will continue to renew the resolve of all executives and make further efforts for the development of our business. We are always grateful for your consistent support.

Regards,

March 2021
Nissan Trading Co., Ltd.
Chief Executive Officer
Mamoru Kawahara,

Representative Director		
Chief Executive Officer	Mamoru KAWAHARA	
Director		
Senior Vice President	Hiroyuki IIDA	Global Materials Division
Director		
Senior Vice President	Kiichi HARIKAE	Global Automotive Components Division
Director		
Corporate Vice President	Takuro ASAI	Corporate Business Administration Division Global Vehicles Division
Director	Takashi Hata	
Auditor	Katsuhiko TANNO	
Auditor	Yosuke KASUE	
Auditor	Naotomo UCHIMURA	
Corporate Vice President	Manabu OKUMURA	Global Machinery Division
Corporate Vice President	Kazuya SHIOTA	Nissan Trading Corporation Americas
Corporate Vice President	Hiroyuki INOUE	Corporate Business Administration Division
Chief Financial Officer		

In conjunction with the reorganization of the group companies, Nissan Trading Japan Co., Ltd. was reorganized into an organization responsible for the operation of mass production parts and materials, and the company's corporate name was changed

Nissan Trading Operation Japan Co., Ltd.

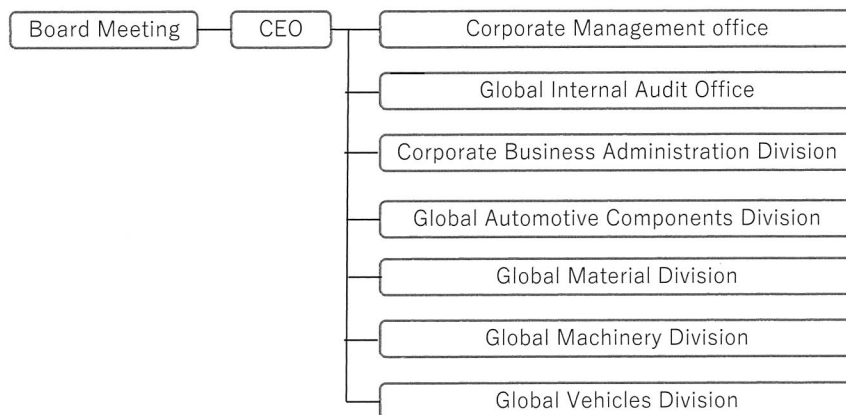
NISSAN TRADING CO., LTD.

91-1 Kawakami-cho, Totsuka-ku, Yokohama, Kanagawa 244-0805, Japan
www.nitco.co.jp

NISSAN
GROUP OF JAPAN - ASEAN

NISSAN TRADING CO., LTD.

Nissan Trading Co., Ltd.



Nissan Trading Operation Japan Co., Ltd.

Representative Director

President

Kazunori MURAYAMA (newly appointed)

Director

Chairman

Mamoru KAWAHARA

Director

Akihiro ISHIWATARI

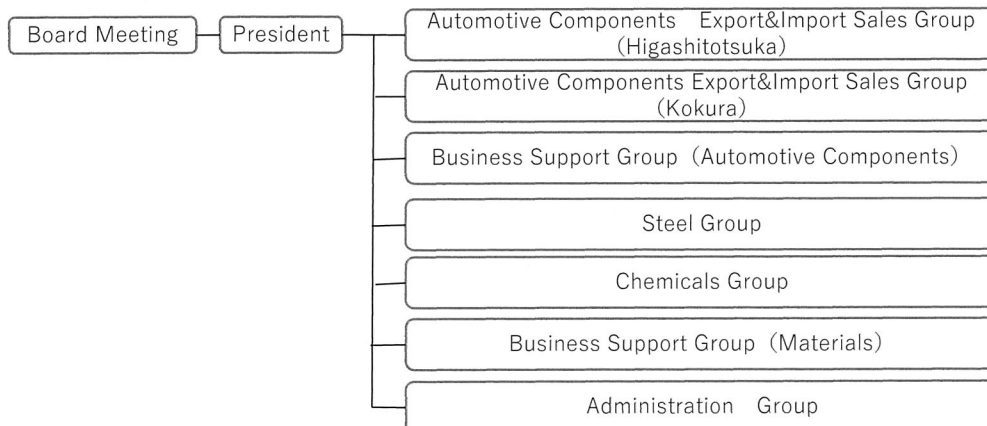
Director

Corporate Vice President

Takuro ASAI Administration Group

Auditor

Katsuhiko TANNO



NISSAN TRADING CO., LTD.

91-1 Kawakami-cho, Totsuka-ku, Yokohama, Kanagawa 244-0805, Japan

www.nitco.co.jp

NISSAN
GROUP OF JAPAN - ASEAN